



Bundesamt für Zivilluftfahrt (BAZL)
Office fédéral de l'aviation civile (OFAC)
Ufficio federale dell'aviazione civile (UFAC)
Federal Office for Civil Aviation (FOCA)
3003 Bern/Berne/Berna

**Lufttüchtigkeitsanweisung
Consigne de navigabilité
Prescrizione di aeronavigabilità
Airworthiness directive**

HB 90-304

Inkraftsetzung
Date en vigueur
Entrata in vigore
Effective Date

24.10.1990

Betroffene Muster – Types concernés – Applicabilità – Models affected

Pilatus PC-7 aircraft, all serial numbers

Anlass/Massnahmen – Objet/Mesures – Oggetto/Provvedimenti – Subject/Action

Power Control Supporting Struts -Fatigue cracks have been found on some struts
- Inspections for cracks at the weld on the HP fuel pump support attachment
lug and radially around the strut tube - Replacement of support strut if
necessary

Fristen – Délais – Scadenza – Compliance

In accordance with Pilatus ASB A73-002

Herkunft – Provenance – Provenienza – Origin

FOCA Emergency AD from 03. September 1990

Bezugnahme – Référence – Riferimento – Reference

Pilatus PC-7 Alert Service Bulletin A73-002

Bemerkungen – Observations – Osservazioni – Remarks

See "Dringliche Lufttüchtigkeitsanweisung/Consigne de navigabilité urgente"
dated September 3, 1990

Rechtsmittelbelehrung siehe TM Nr.
Voies de droit voir CT no. F 80.015-10
Rimedi giuridici vedi CT no.
Right to appeal see TC no.

Seite
Page 1
Pagina
Page

von
de
di
of

4

≡PILATUS≡
PC-7 TURBO-TRAINER
ALERT SERVICE BULLETIN

ALERT SERVICE BULLETIN A73-002

POWER CONTROL SUPPORTING STRUT ASSEMBLY - CRACKING

1. Planning Information

A. Effectivity : All PC-7 Aircraft

Power Control Supporting Struts Part Nos.:
-115.75.07.108 (Engines without SB73-001)
-115.75.07.163 (Engines with SB73-001).

B. Reason

Fatigue cracks have been found on some Power Control Supporting Struts. The struts were cracked at the weld on the HP fuel pump support attachment lug and radially around the strut tube.

C. Description

This Alert Service Bulletin instructs a inspection for cracks before the next flight and introduces an inspection of the tube every 25 flying hours until a modified strut is available.

D. Compliance

Mandatory before the next flight.

E. Manpower

Manhours - 0.5 (Inspection Only)

F. Materials

Part No.	Designation	IPC-Fig Item
115.75.07.163	Power Control Supporting Strut	73-20-01, 01-40

NOTE: Only Power Control Supporting Struts With This Part Number Will Be Supplied. The Strut Is Interchangeable With Struts Installed On Engines Without SB73-001.

G. References

IPC 73-20-01 Fig 1, Item 40 (Engines with SB73-001).
IPC 71-00-01 Fig 7, Item 5 (Engines without SB73-001).
Service Bulletin PC-7-73-001 (Pilatus s/n 53) - Introduction of Electro Mechanical Override on FCU

≡PILATUS≡
PC-7 TURBO-TRAINER

ALERT SERVICE BULLETIN

2. Accomplishment Instructions

A. Preparation

- (1) Open access panel Eng3R.
- (2) Clean the area around the HP fuel pump support attachment lug on the support strut. Use a clean lint free cloth made moist with white spirit.

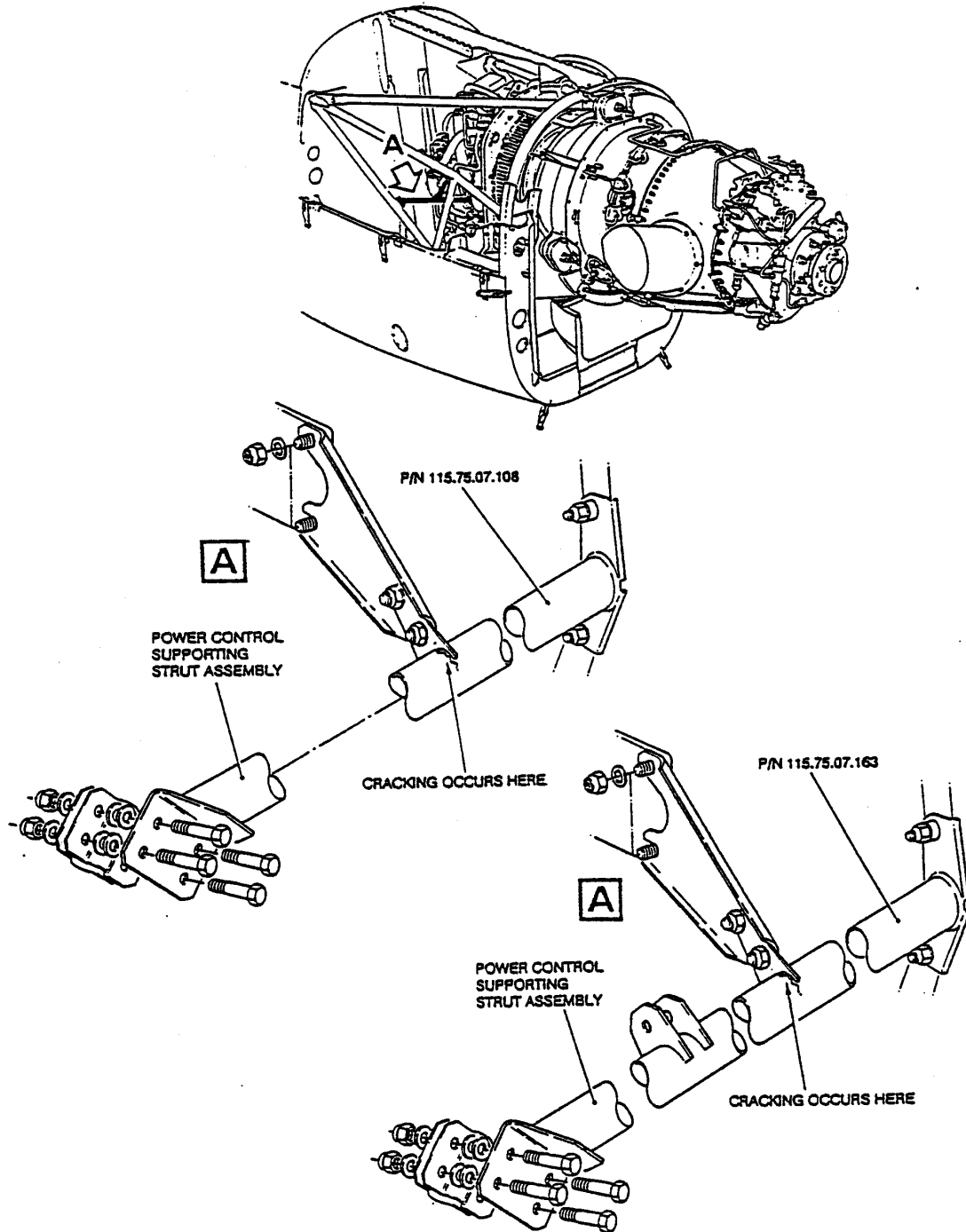
B. Inspection (Ref. Fig 1)

- (1) Inspect the weld and the tube structure around from the weld for signs of cracks. Use a torch and mirror.
 - (a). If cracks are found:
 - Replace the support strut before the next flight.
 - (b). If no cracks are found or the strut is replaced:
 - Inspect the support strut every 25 flying hours until further notice.

C. Close Up

- (1) Close the engine access panel Eng3R.

≡PILATUS≡
PC-7 TURBO-TRAINER
ALERT SERVICE BULLETIN



Power Control Supporting Strut - Inspection
Fig 1